



**MODULUX**  
HOMES

**GARDEN VILLA**

*Compact & Innovative*

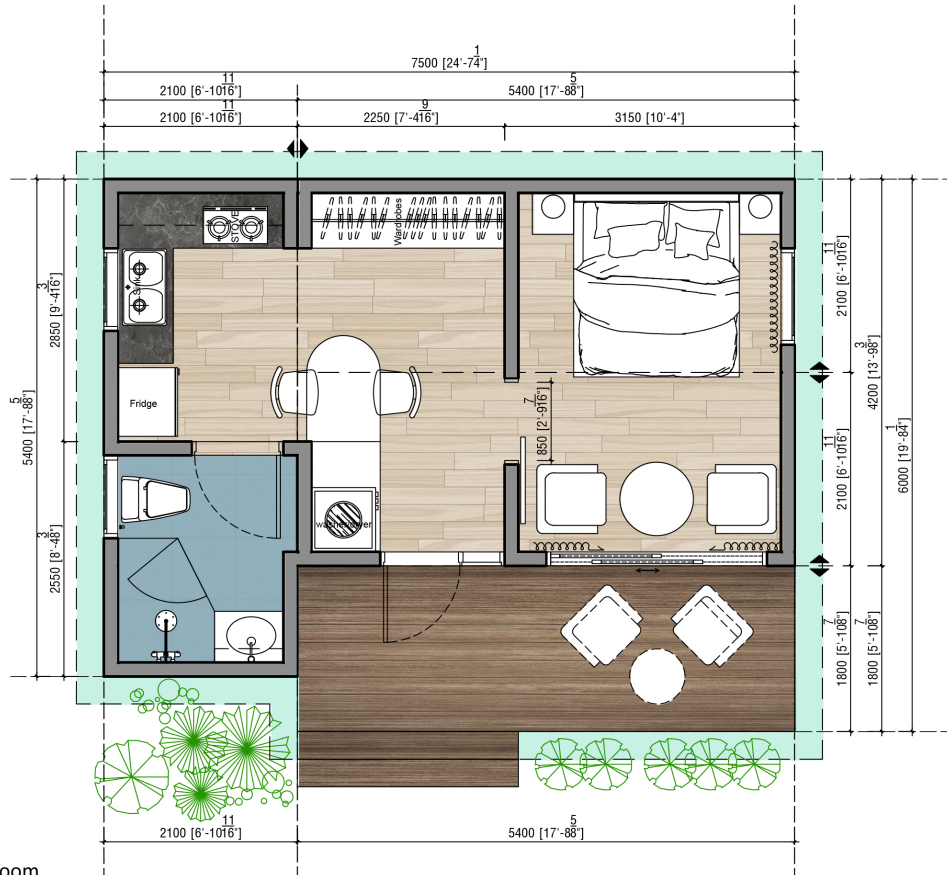
*366 sq ft*

# Garden Villa

366 sq ft / 34m<sup>2</sup>

Compact and innovative, the Garden Villa brings all your needs in a compact form. Combining flexible design, diverse finishing materials, and the latest manufacturing technologies to create user-friendly living spaces while meeting the "green" demands of today's age. The Garden Villa has a living space of 366 sq ft, featuring 1 bed and 1 bathroom. Through utilization of modern processing technologies and with consideration of the environment, this model achieves the impossible; the collaboration between sustainability and elegance.

Materials are from certified plantations in today's leading countries, applying European and New Zealand standard treatment technology.



**MOD.H 101A**  
1 Bed room & 1 Bath room

**Floor Plan**  
Living Space : 34 sqm/ 365.9 sqft  
Outdoor Decking : 11.1sqm/ 119.4sqft



# GARDEN VILLA

## General Info.

366 sq ft / 34m<sup>2</sup>  
1 bedroom  
1 bathroom

Panelized Installation  
1 story  
1 kitchen/pantry

## Features

Steel Framework  
Solar + Battery Powered  
Smart home system

Insulated Walls  
Front Porch  
2 entrances (Oversized Sliding Doors)

## Finishing Options

Roofs  
Cladding  
Ceiling  
Flooring/Decking

Doors  
Lighting  
Appliances  
Furnishings

## Pricing Details

*\*Subject to change*

House - TBD  
Transport - TBD  
Installation - TBD

# 3D Model/ Exterior Overview



# 3D Model/ Living - Dining - Kitchen

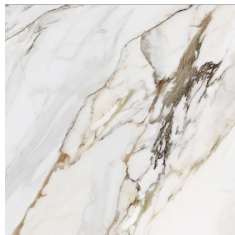


# 3D Model/ Bedroom - Bathroom



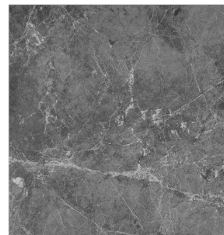
**SPC Flooring-Timber Planks**

*Color: White Oak*



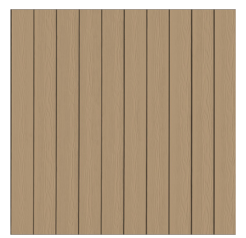
**Kitchen Benchtop**

*Color: White Marble*



**Bathroom Flooring**

*Color: Grey Marble*



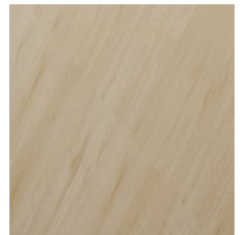
**Wall & Ceiling**

*Color: White Oak*



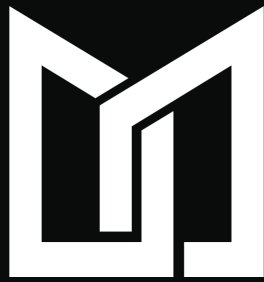
**Bathroom Wall**

*Color: White Marble*



**Cabinet**

*Color: White Oak*



[moduluxhomes.com](http://moduluxhomes.com)